

DW-VET2 VET ULTRASOUND SCANNER

Application for: dog, cat, pig, cow, sheep, horse (with veterinary software)

Technical Specification

Light and portable, much clearer image and convenient to operate. DW-VET2 has an extra-long battery life with over 8 hours of standby time and 4 hours of working time - useful for consultation in various environment of cities, towns, outdoor. A variety of charging to ensure the examination consultation under different environments.

- * 12.1 inch HD LCD display
- * Rechargeable battery
- * THI and Histogram function
- * Support OB Report
- * Support: Chinese/English/Spanish/French/Portuguese/Russian/

Basic Parameters:

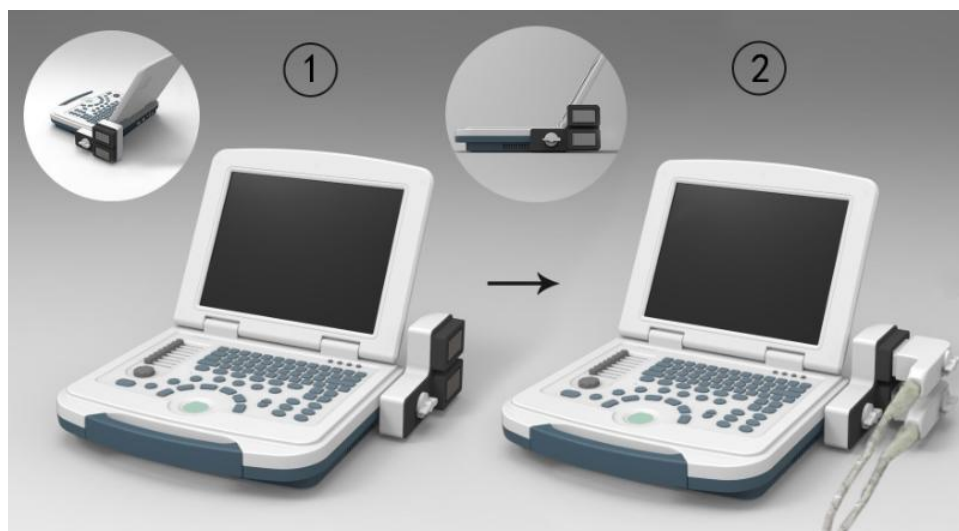
Probe Depth: 16 levels
Probe Frequency: 5 levels
Main gain: 0-100%
8 TGC: adjustable
Focus: 4
Image storage: 4920 images
Pseudo color: 0-7
Scanning area(angle): 3 levels
Edge enhancement: 0-3
Linear correlation: 0-5
Gamma correction: 0-7
Frame correlation: 0-3
Dynamic range: 0-135
Cine loop: 512 frames
Body mark: ≥17 kinds, able to customize (pig *3, dog*2, cattle *2, horse *2, cat*2, goat *2, camel *2, sheep *2)
Scanning depth: max 189mm, micro-convex probe
U Disk support: FAT32 format
Image reversal: up/down, left/right, black/white
Measurement: ≥8 kinds (pig, cattle, dog, horse, cat, goat, camel, sheep)



Probe frequency:

Convex 3.5MHZ: 2.0MHz、2.5MHz、3.5MHz、4.0MHz、5.0MHz;
Micro-convex 6.5MHZ: 5.0MHz、5.5MHz、6.5MHz、7.0MHz、7.5MHz;
Linear/rectal 7.5MHZ: 5.5MHz、6.5MHz、7.0MHz、7.5MHz、9.0MHz.

Docking station (Option)



Probe holder (Option)

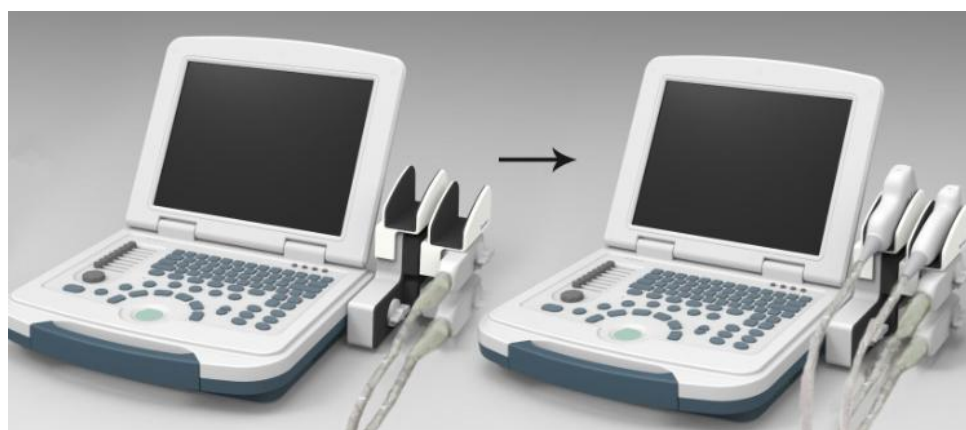


Image Gallery:

