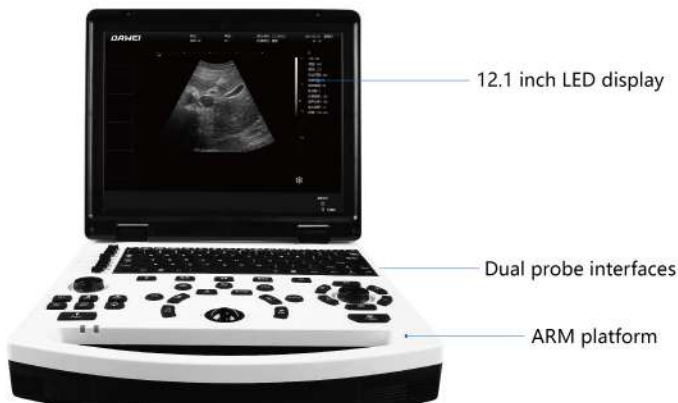




For love, image the world

690-VET

Full Digital Veterinary
Ultrasound System



Probes



Functions

690-VET full digital ultrasound diagnostic instrument is a new notebook type black and white ultrasound developed by Dawei veterinary medical. It adopts the new ARM architecture, compared with the traditional microcontroller system: faster processing speed, stronger processing capacity, larger storage capacity, higher safety performance, more convenient upgrade and maintenance, etc., which effectively brings great convenience to users.

To meet the basic hospital in the abdomen, obstetrics, gynecology, heart, urinary system, small organs, superficial, vascular, and other aspects of the examination and diagnosis.

- Operating system: ARM
- Tissue harmonic imaging
- Support dual probe sockets
- Display mode: B, B+B, B+M, M, 4B
- Playback function ≥ 256 frames
- Image storage ≥ 300 , external USB storage
- Display: 12.1 inch 1024*768 LED screen
- System languages: Chinese and English
- Machine size: 290*301*65mm
- Weight: 3.3 kg

Imaging

